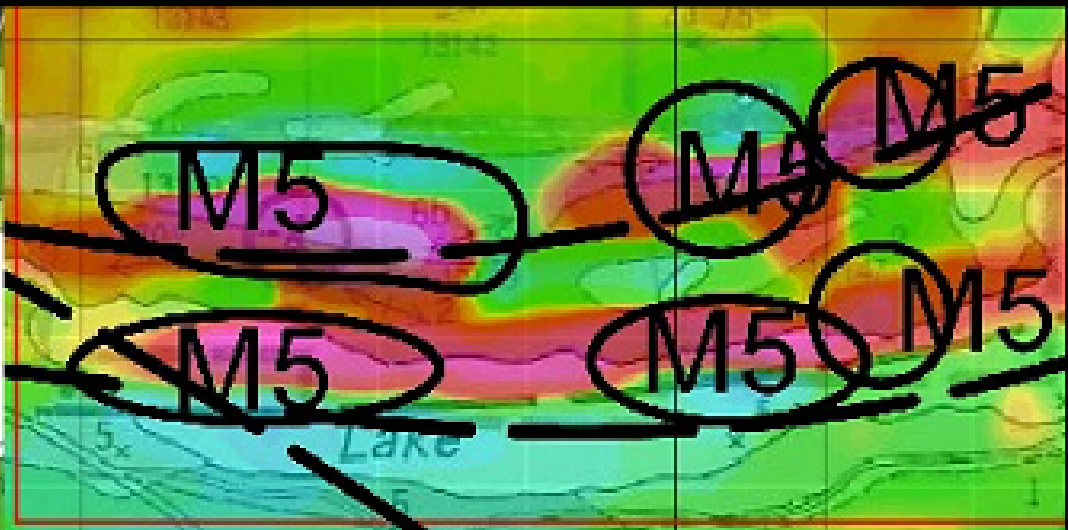


METALORE'S 100% OWNED



PAINT LAKE GOLD PROJECT

FORWARD LOOKING STATEMENTS

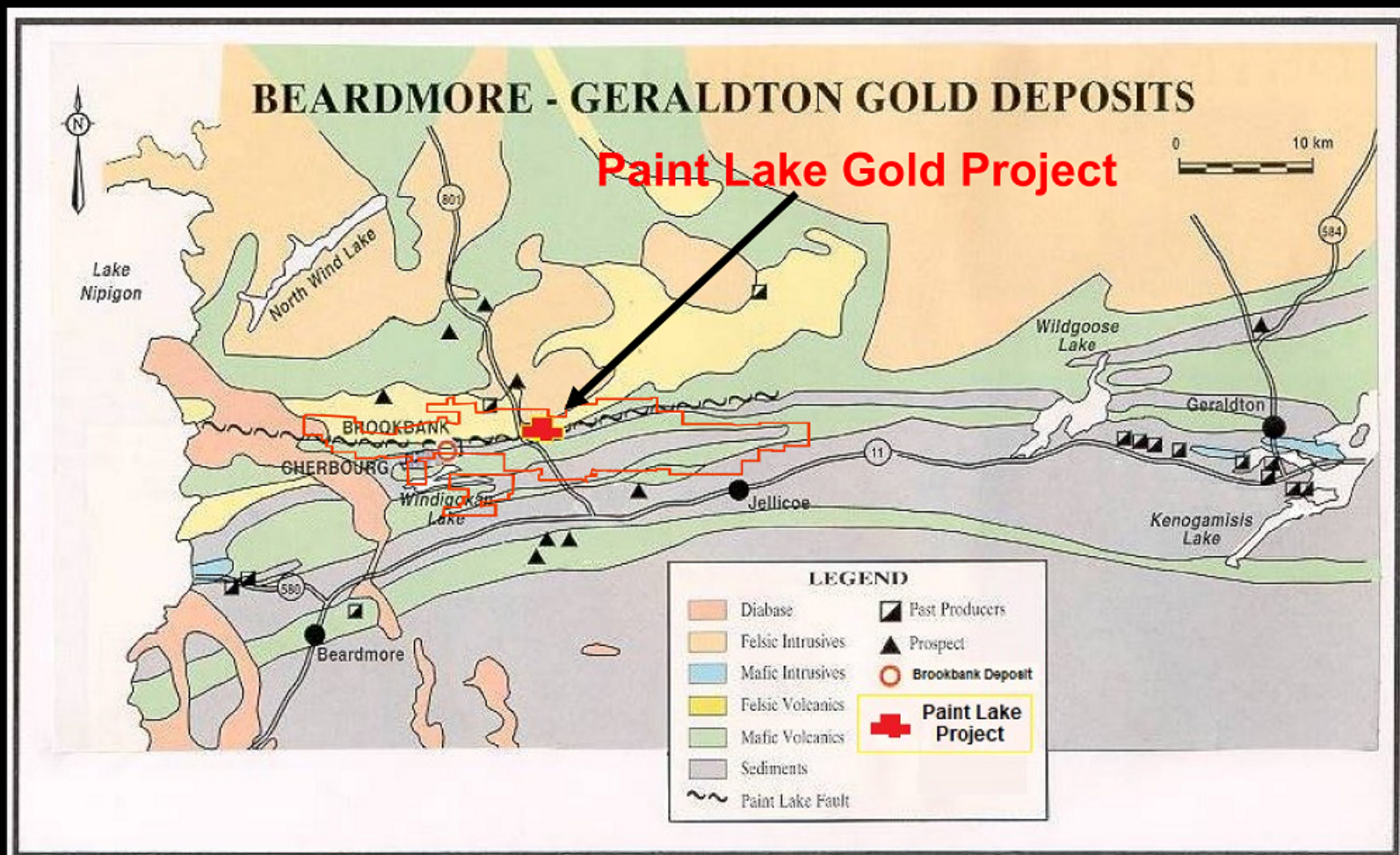
This presentation contains "forward-looking information" within the meaning of applicable Canadian securities legislation. Forward-looking information includes, but is not limited to, information with respect to Metalore's exploration plans, strategies and future prospects as well as information with respect to potential mineralization and resources. Generally, forward-looking information can be identified by the use of forward-looking terminology such as "plans", "expects", or "does not expect", "is expected", "budget", "scheduled", "estimates", "forecasts", "intends", "anticipates", or "does not anticipate", or "believes" or variations of such words and phrases or state that certain actions, events or results "may", "could", "would", "might", or "will be taken", "occur", or "be achieved". Forward-looking information is based on the opinions and estimates of management at the date the information is made, and is based on a number of assumptions and is subject to known and unknown risks, uncertainties and other factors that may cause the actual results, level of activity, performance or achievements of Metalore to be materially different from those expressed or implied by such forward-looking information, including risks associated with the exploration, development and mining industry such as economic factors as they effect exploration, future commodity prices, changes in foreign exchange and interest rates, actual results of current exploration activities, government regulation, political or economic developments, environmental risks, permitting timelines, capital expenditures, operating or technical difficulties in connection with mining or development activities; employee relations, the speculative nature of gold exploration and development, including the risks of diminishing quantities of grades of reserves; risks involved in the exploration, development and mining business, contests over title to properties, and changes in project parameters as plans continue to be refined as well as those risk factors discussed in Metalore's disclosures, available on www.sedar.com. Although Metalore has attempted to identify important factors that could cause actual results to differ materially from those contained in forward-looking information, there may be other factors that cause results not to be as anticipated, estimated or intended. There can be no assurance that such information will prove to be accurate, as actual results and future events could differ materially from those anticipated in such information. Accordingly, readers should not place undue reliance on forward-looking information. Metalore does not undertake to update any forward-looking information, except in accordance with applicable securities laws.



Paint Lake Gold Project Location Map

- Centrally located within the Archean age east-west trending Beardmore – Geraldton Gold District
- Fully accessible by road, 2 hour drive north-east of Thunder Bay
- 5 km east of Brookbank Deposit

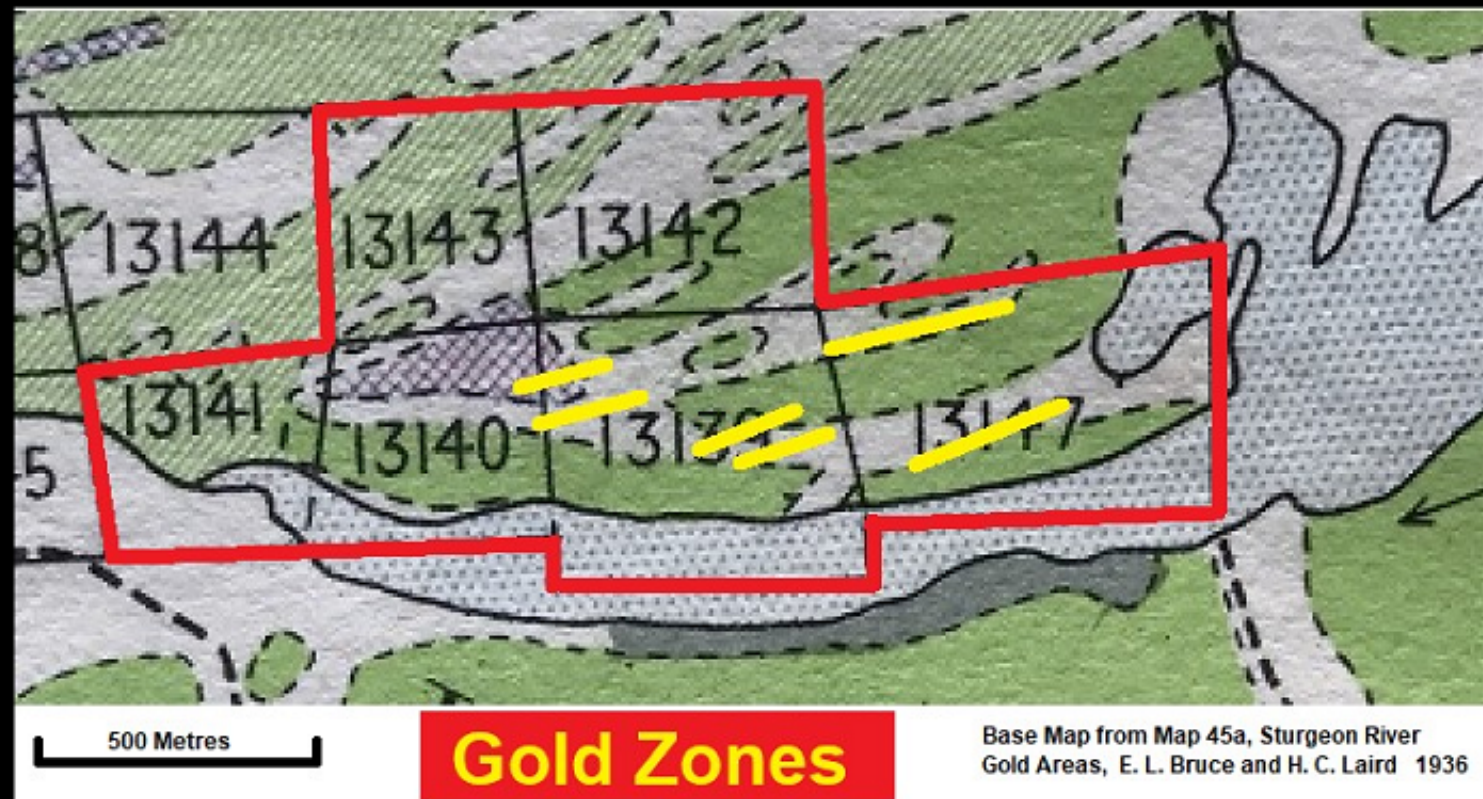
Geology of Beardmore-Geraldton Gold Belt



1934 Gold Discovered at Paint Lake

Gold discovered in 1934 and claims were staked

Claims to west were eventually allowed to lapse but Tyson kept main gold claims and sold to Metalore in 1981



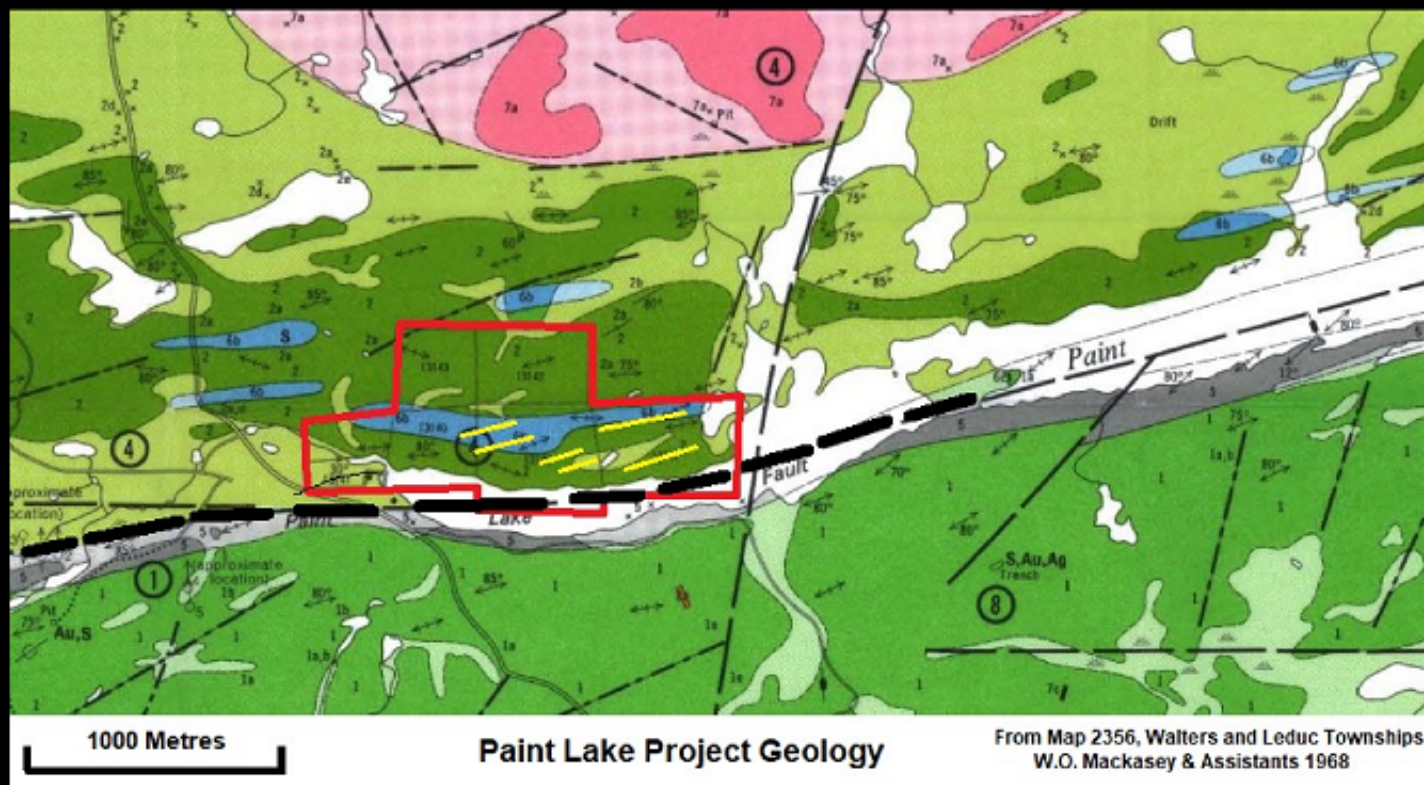
Another gold zone – well, so what ?

What makes this such a standout?

1) The mineralized zones parallel the main Paint Lake Fault. (Deep mineralization requires a well developed plumbing system in proximity to major faults)

2) Gold occurs throughout each of the six splay faults within this dilation zone

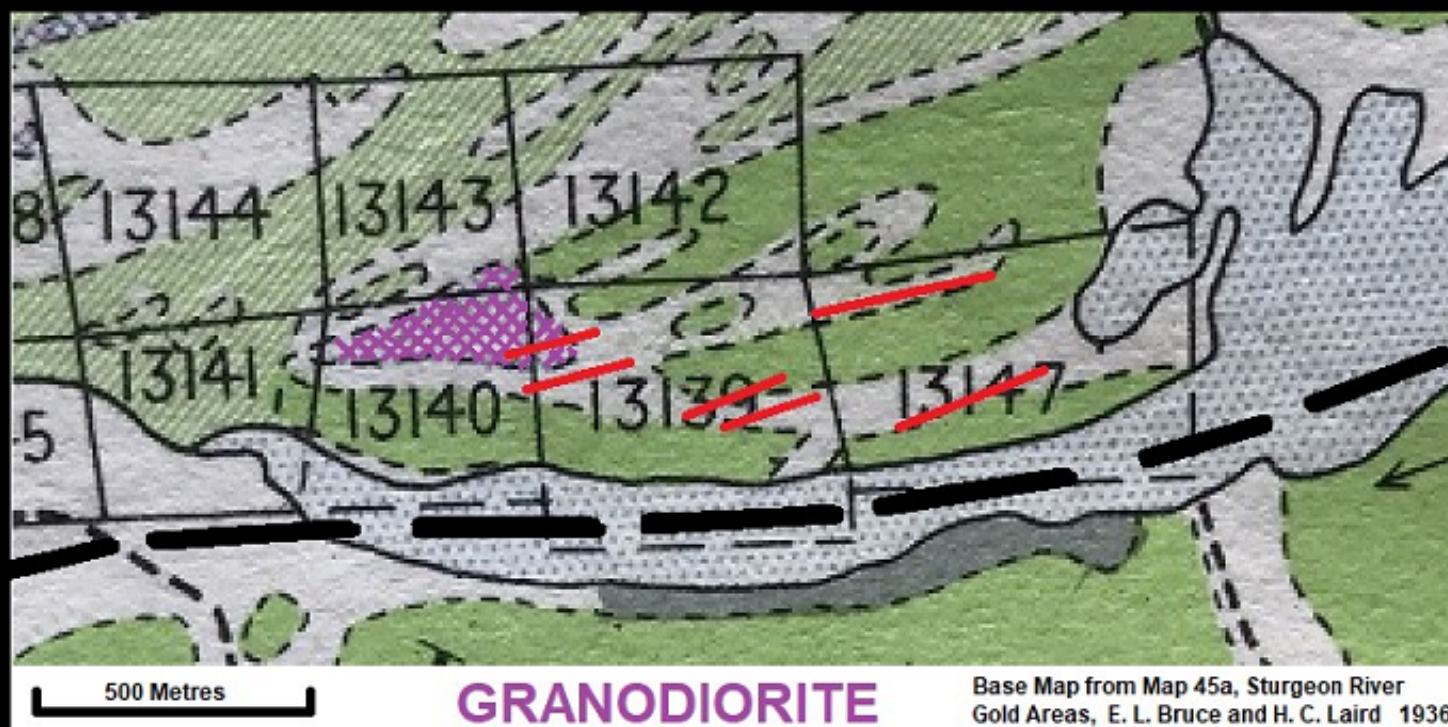
3) Claims have not been explored since the 1930's

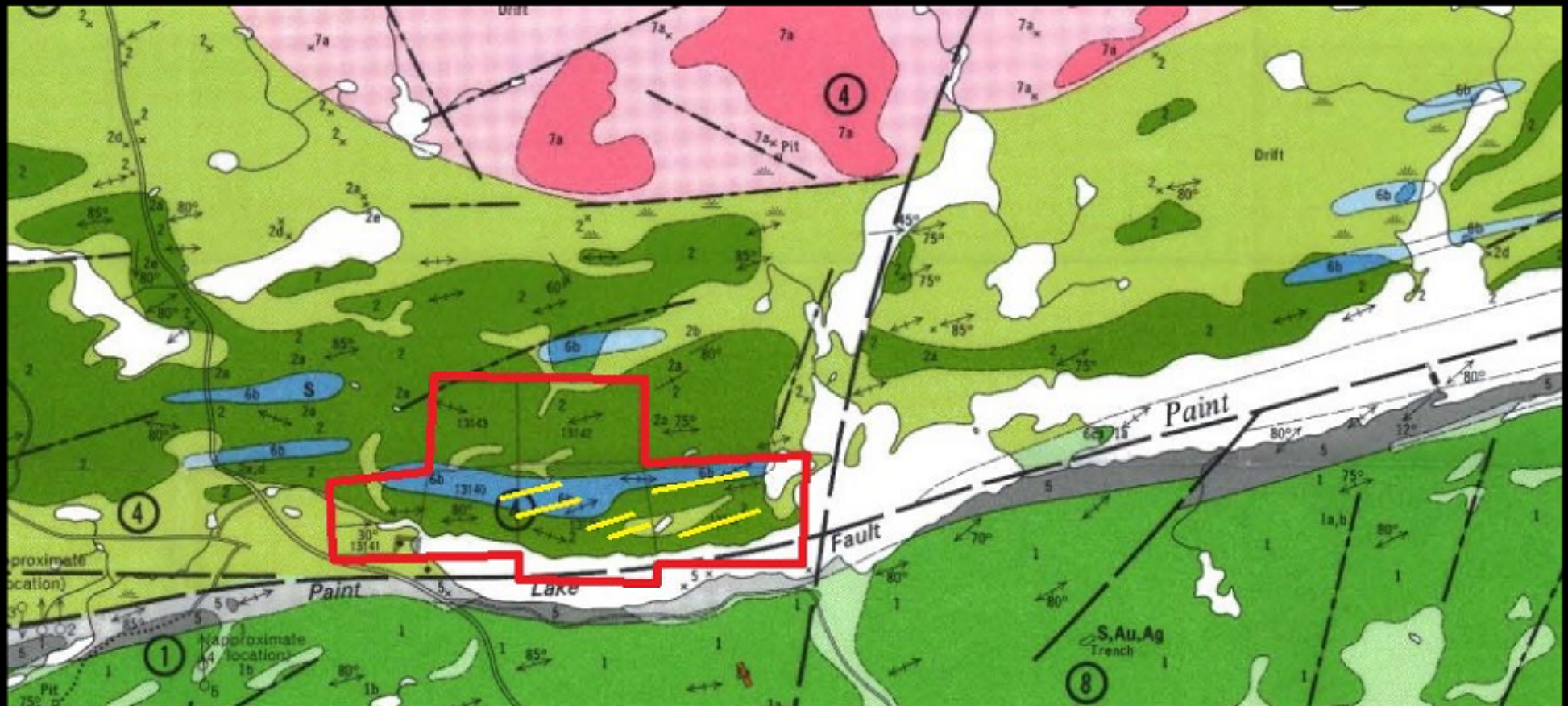


HEAT SOURCE = GROWTH of Gold MIn

1936 mapping shows a granodiorite in the central area...which could be both the SOURCE of Gold and a heat source to develop the plumbing system

- Structure (Dilative fault)
- Intrusive (Granodiorite)
- Gold panned in 6 zones

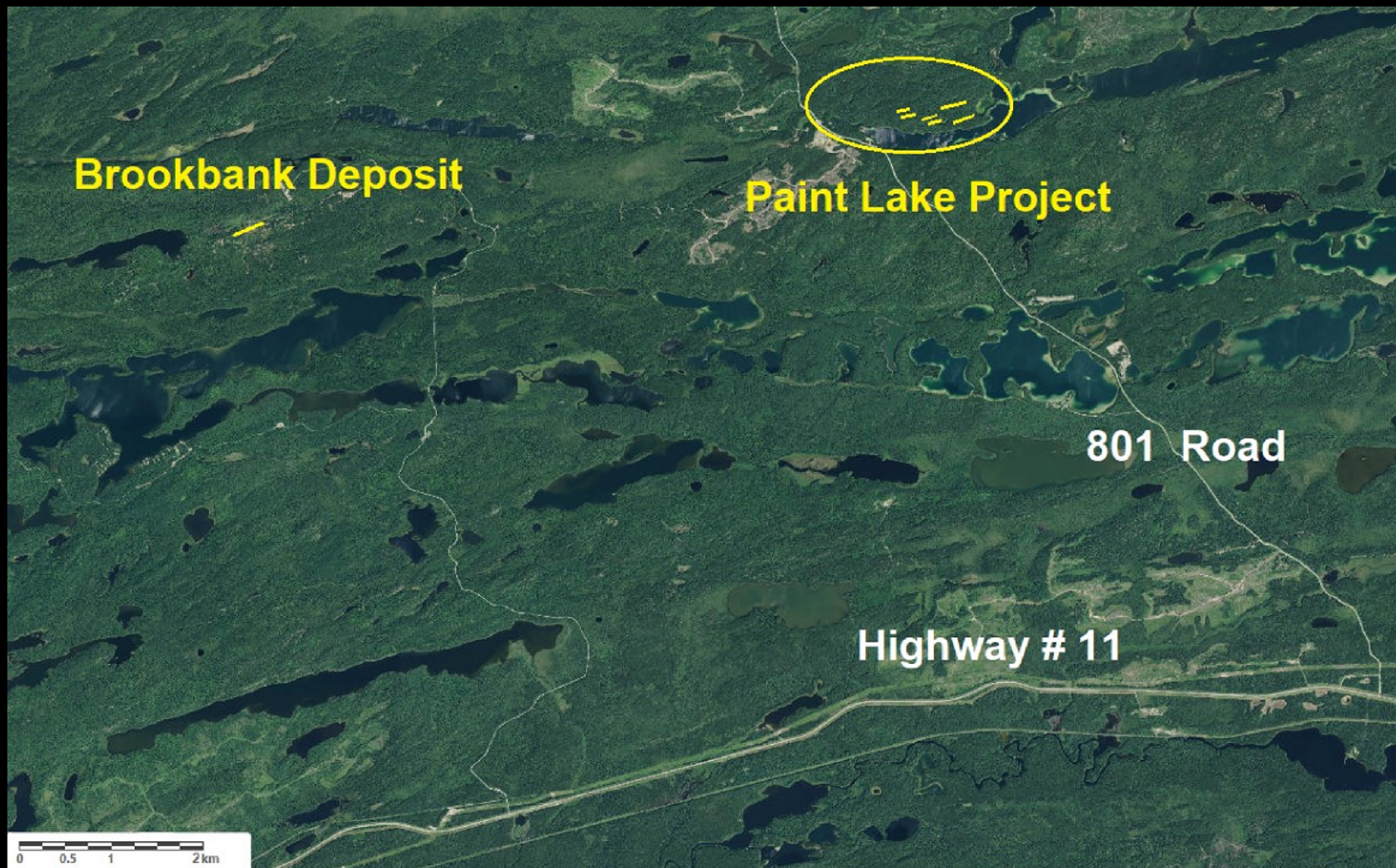




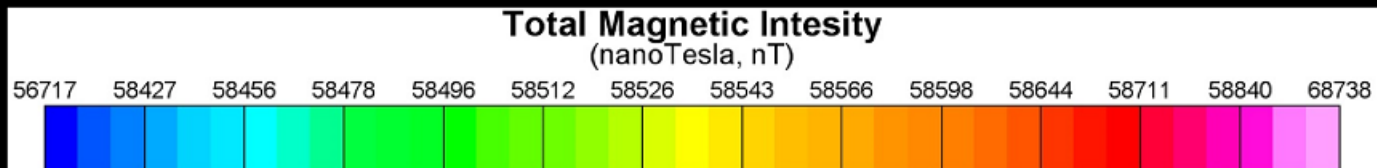
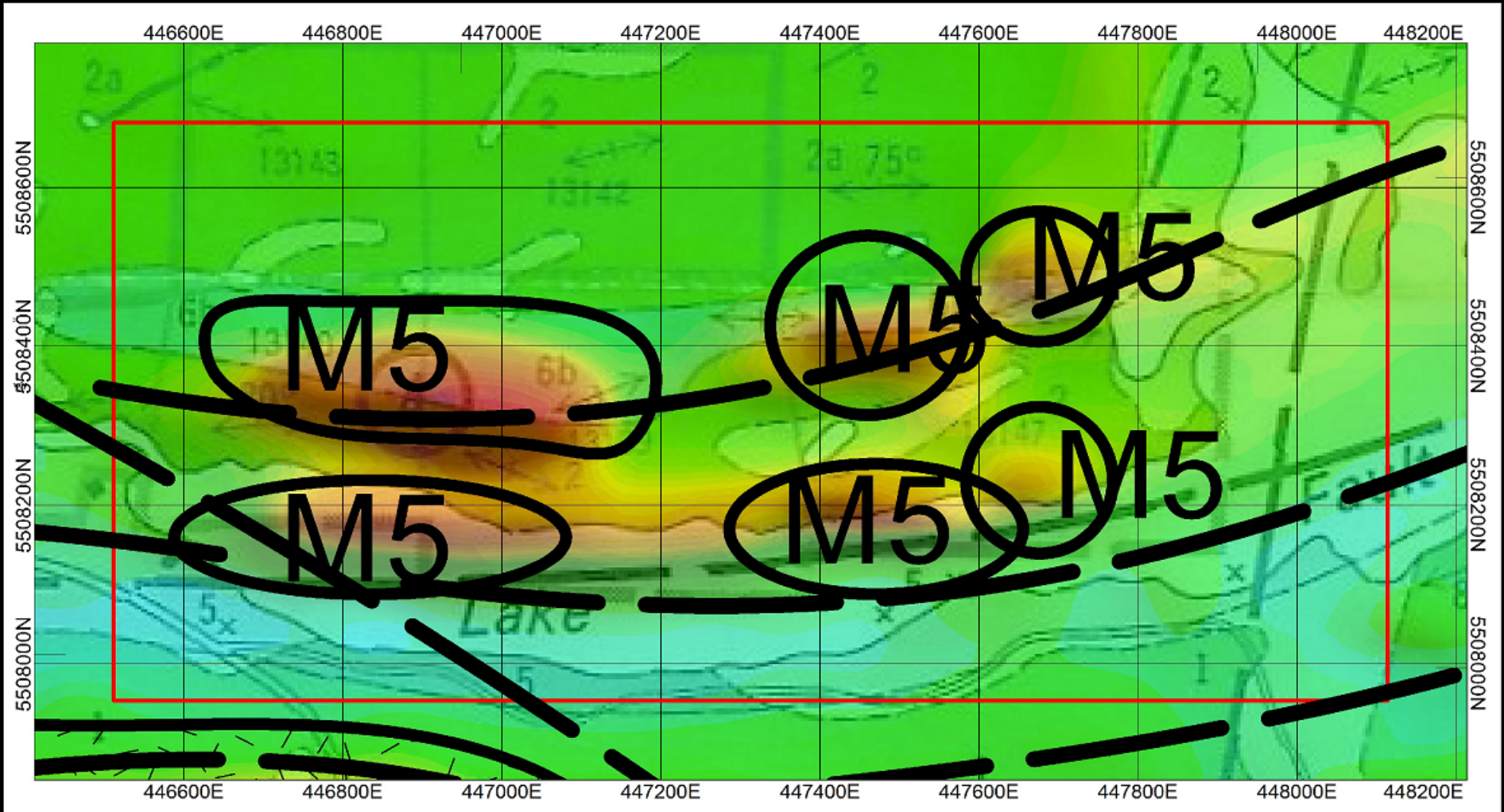
What else is required for an ore body?

GOLD + FAULT ZONE + INTRUSIVE + ???

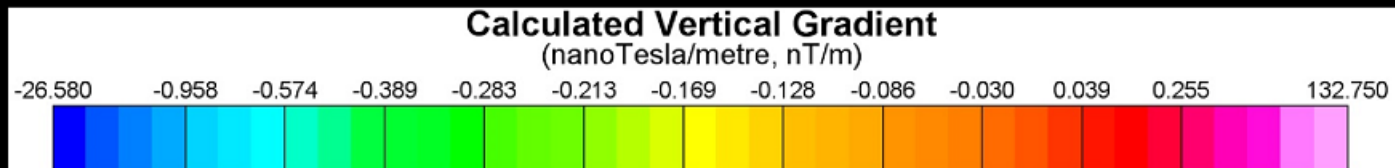
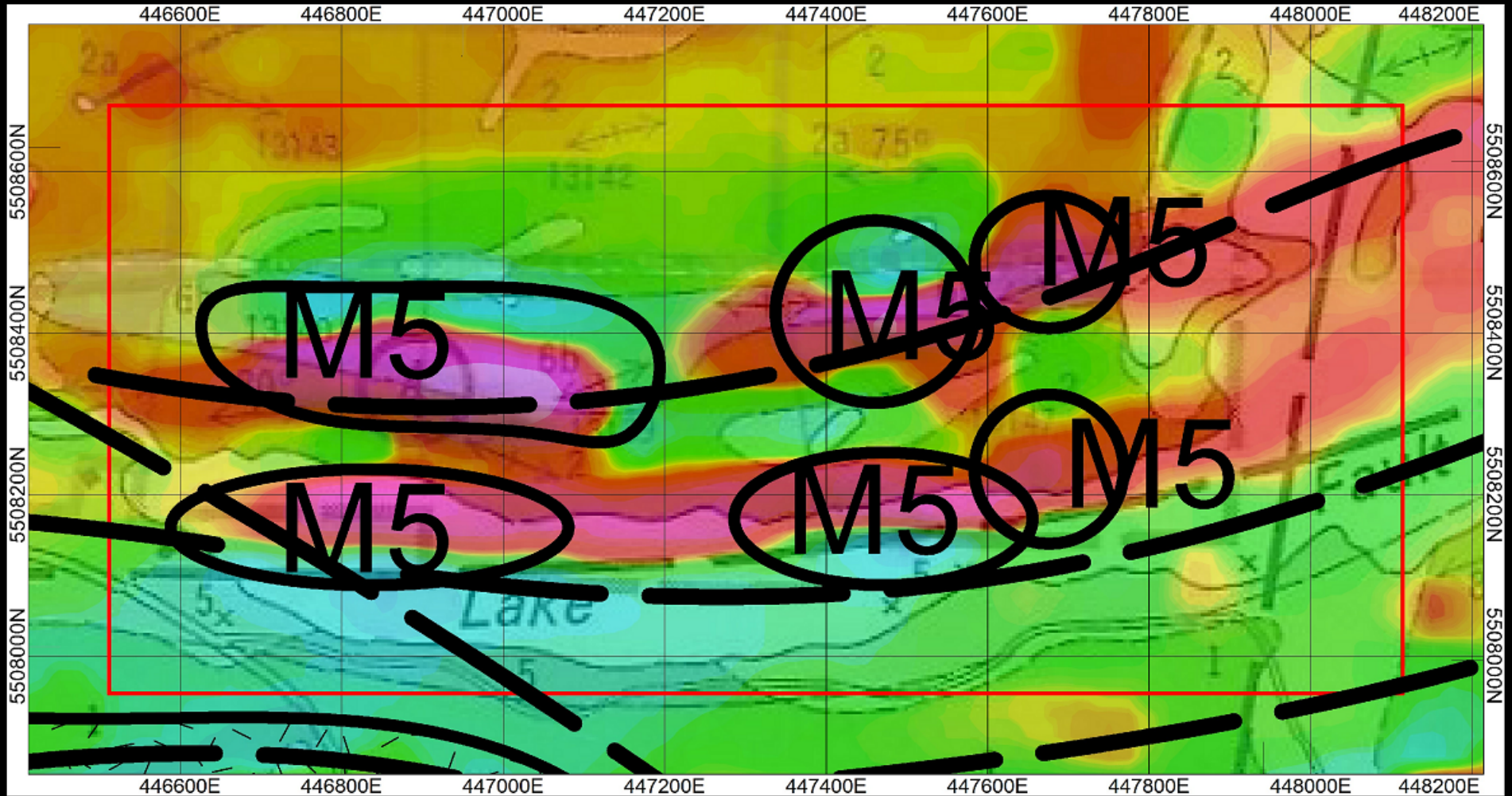
SIZE: Brookbank Deposit vs. Paint Lake Project



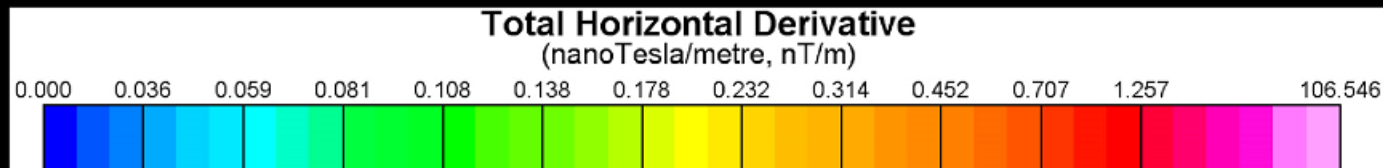
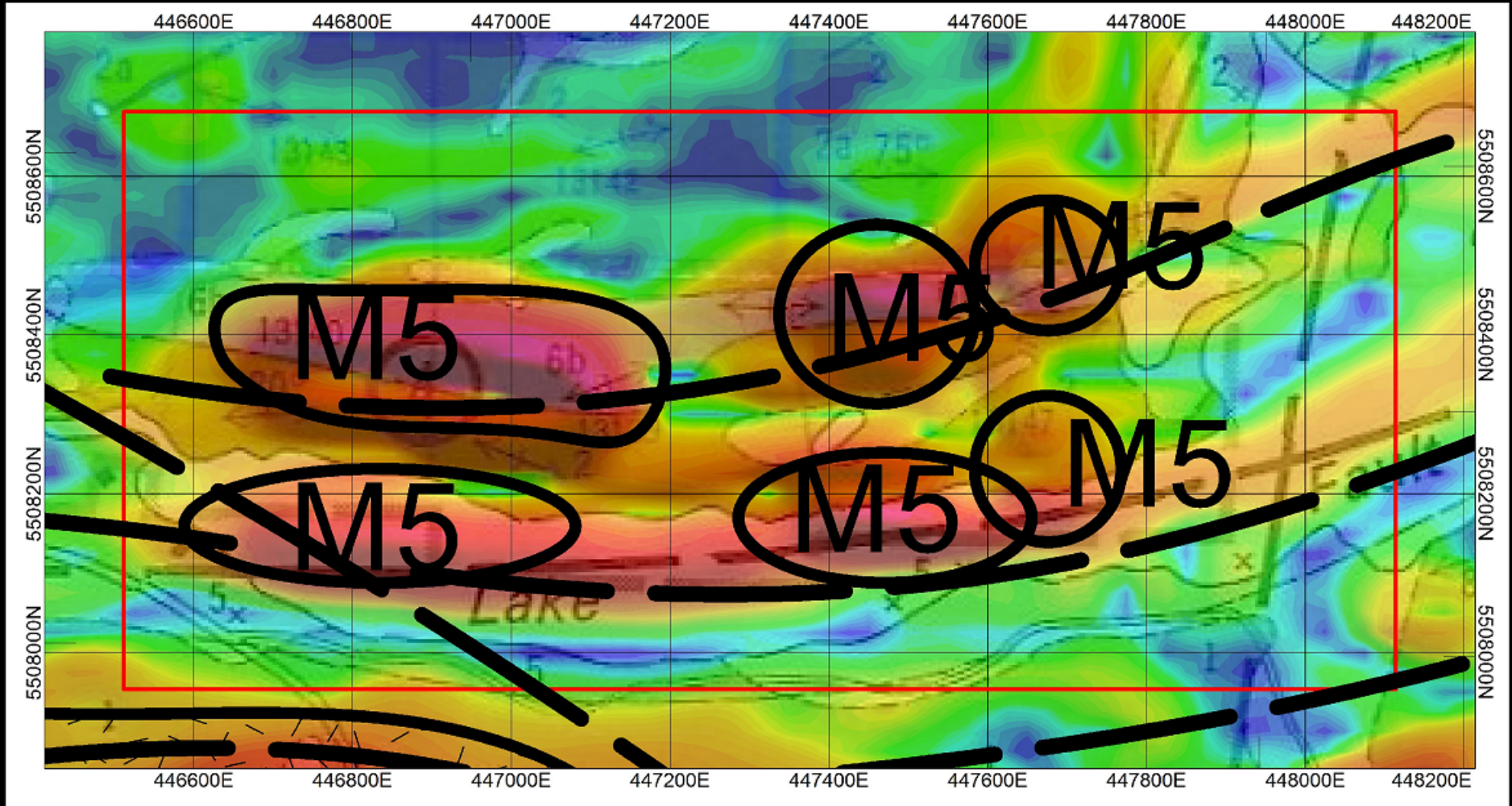
Total Magnetic Intensity



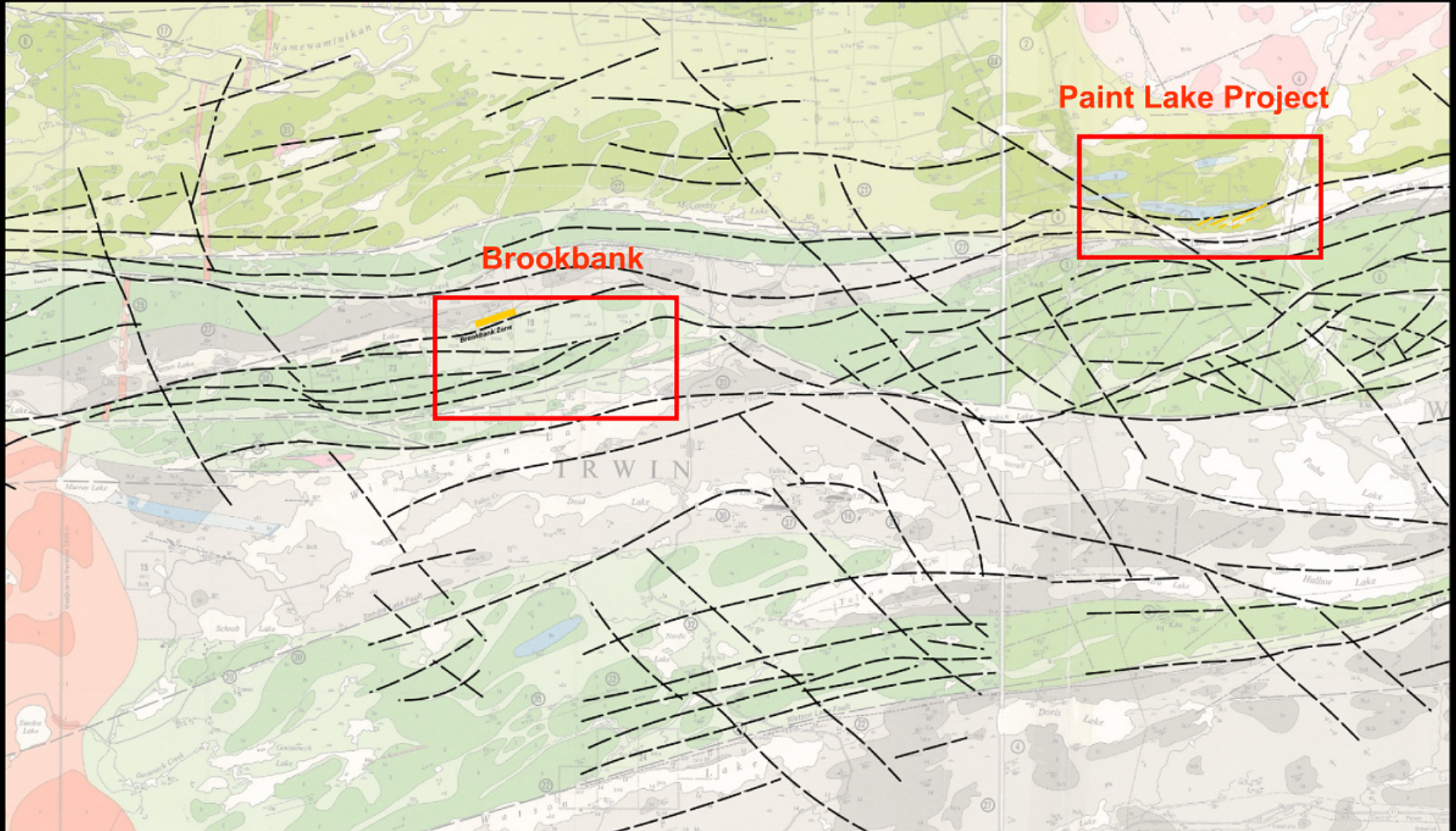
Calculated Vertical Gradient



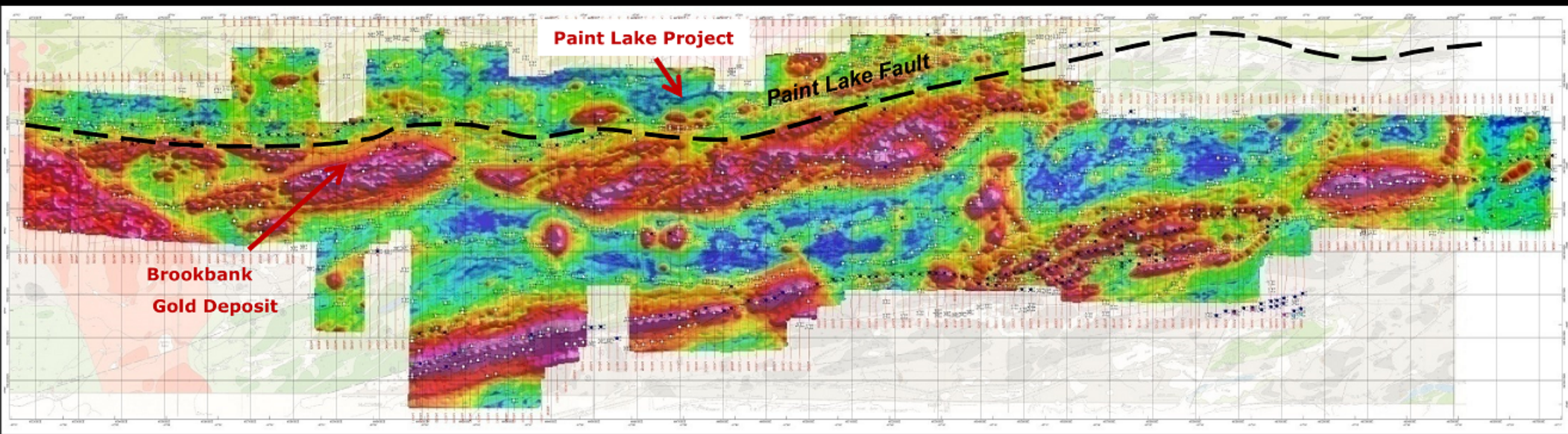
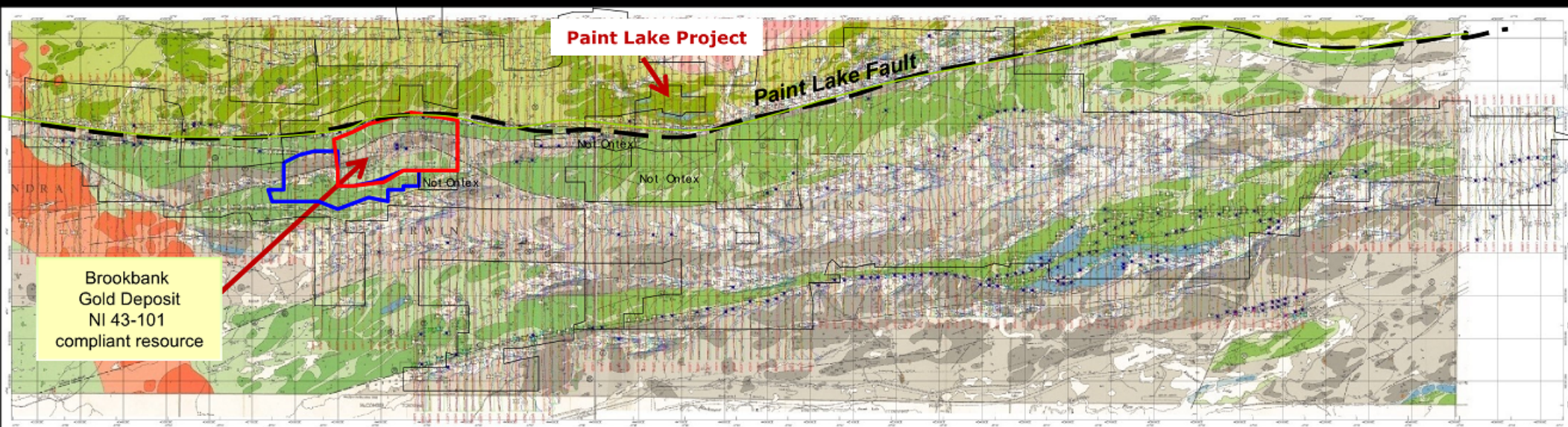
Calculated Total Horizontal Derivative of the TMI



Geology and Geophysical Faults: Brookbank & Paint Lake Project



Property Geology, Magnetics & EM





TSXV : MET

PAINT LAKE GOLD PROJECT

Field Season begins May 2021