

**April 16 2024**



# FORWARD LOOKING STATEMENTS

This presentation contains certain "forward-looking Statements".

All statements, other than statements of historical fact, that address activities, events or developments that Metalore Resources Limited believes, expects or anticipates will or may occur in the future are forward-looking statements.

Forward-looking statements are often, but not always, identified by the use of words such as "seek", "anticipate", "believe", "plan", "estimate", "expect", and "intend" and statements that an event or result "may", "will", "can", "should", "could", or "might" occur or be achieved and other similar expressions.

These forward-looking statements reflect the current internal projections, expectations or beliefs of Metalore Resources Limited based on information currently available to Metalore Resources Limited.

Forward-looking Statements are subject to a number of risks and uncertainties, including those detailed from time to time in filings made by Metalore Resources Limited with securities regulatory authorities, that may cause the actual results of Metalore Resources Limited to differ materially from those discussed in the forward looking statements, and even if such actual results are realized or substantially realized, there can be no assurance that they will have the expected consequences to, or effects on Metalore Resources Limited.

Metalore Resources Limited expressly disclaims any obligation to update or revise any such forward-looking statements.

## CURRENT DEVELOPMENTS

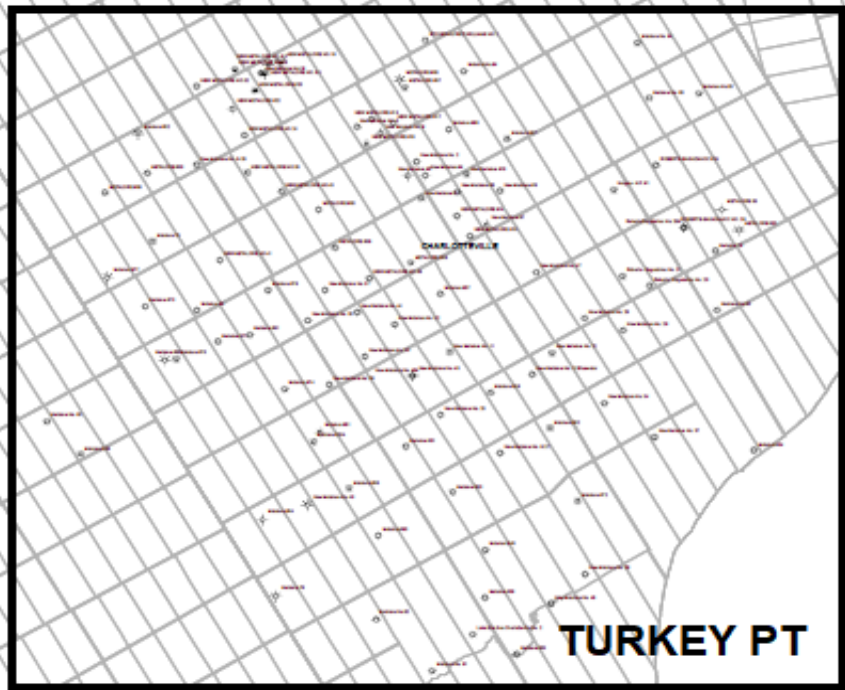
- Brookbank Joint Venture partner Equinox Greenstone Gold Mines proposes a gold, copper and nickel exploration program FOLLOWING the pouring of gold at the Greenstone Mine (2024)



# Natural Gas Operations

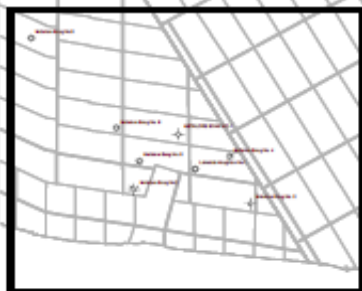
SIMCOE

# CHARLOTTEVILLE GAS FIELD



TURKEY PT

# HOUGHTON GAS FIELD

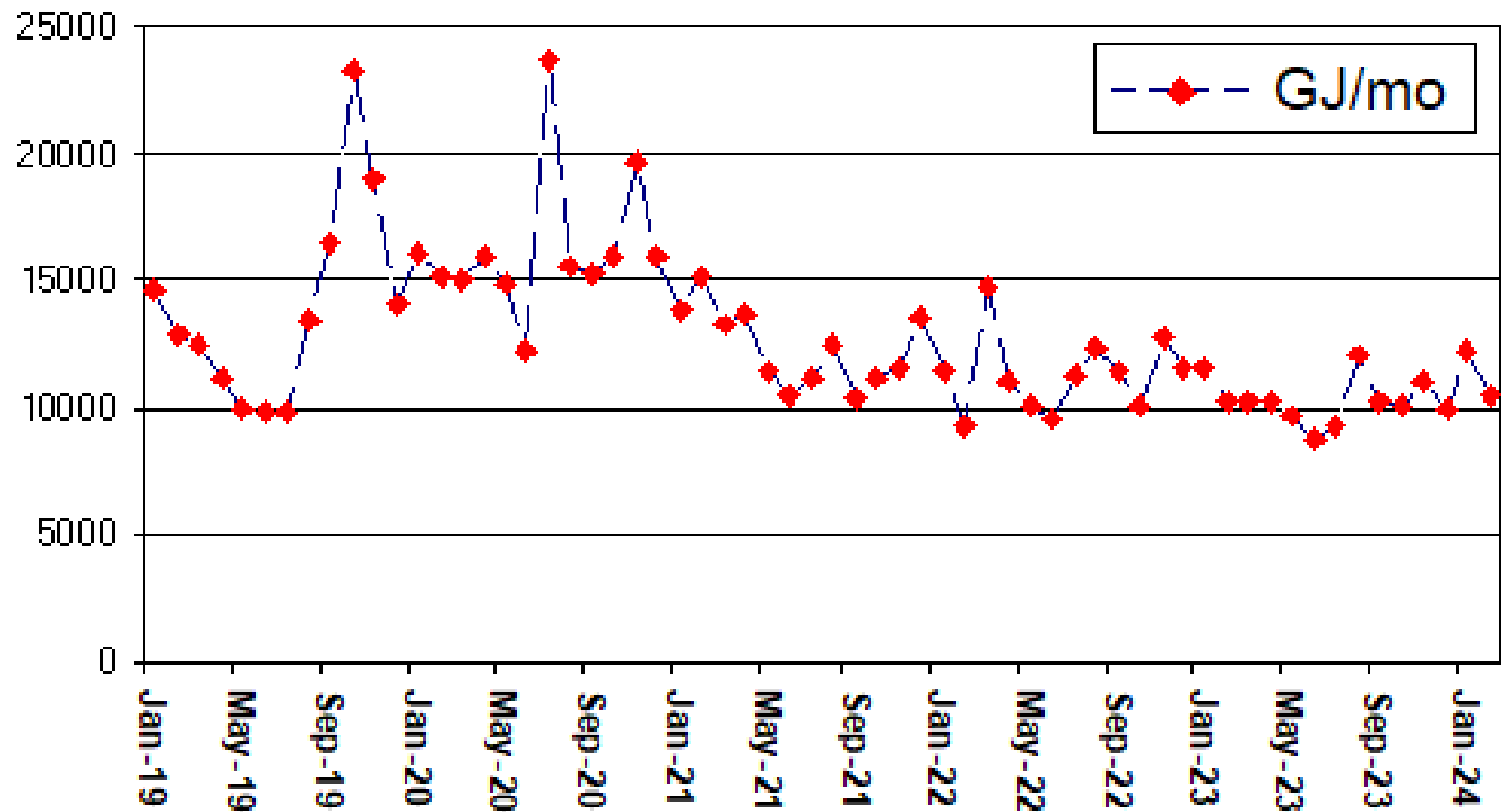


LAKE ERIE

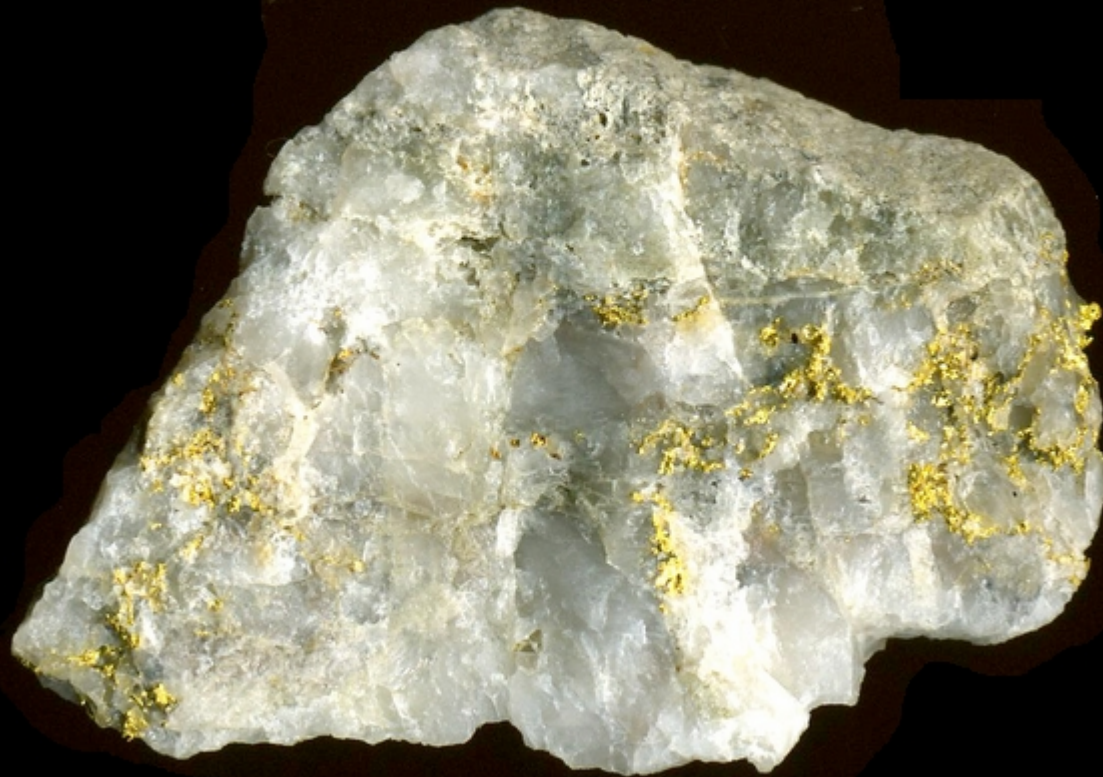
LONG POINT



## Natural Gas Production (5 Year Chart)



# GOLD

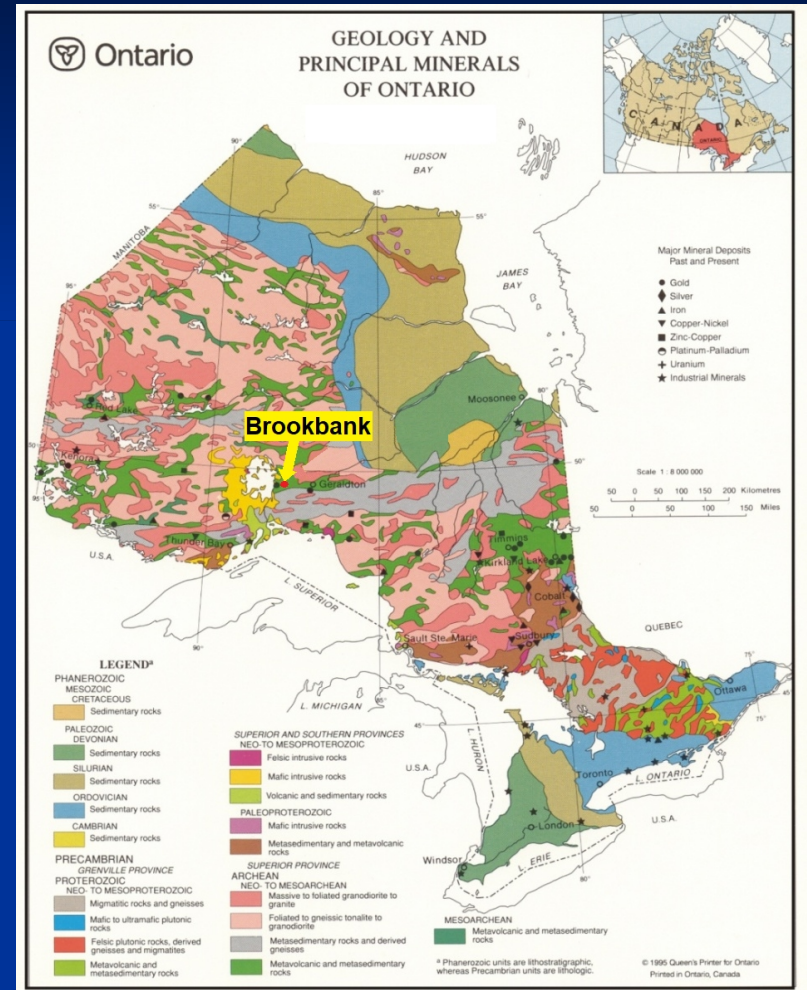


# BROOKBANK JOINT VENTURE PROPERTIES

The Brookbank properties are located within the eastern Wabigoon granite-greenstone belt of the Superior province of Ontario.

Metalore has a joint venture agreement with Greenstone Gold Mines L.P., (Equinox Gold Corp (60%) and Orion Mine Finance Group (40%)) to explore the Brookbank properties.

(April 9 2024: Greenstone Gold Mines expects to pour gold from mining near Geraldton, Ontario in May)





# BROOKBANK JOINT VENTURE SUMMARY

## BROOKBANK Gold Deposit NSR:

- Contains Open Pit/Underground 670,000 oz Au (ind+inf) 2012
- 1.0% NSR in 18 claims which includes Brookbank Deposit
- Excellent potential to increase resources

## JV Brookbank Claims Package:

- 35 kilometers of strike length
- Great potential to find additional gold resources
- Favorable geology, alteration and structure

## Cherbourg & Foxear Properties:

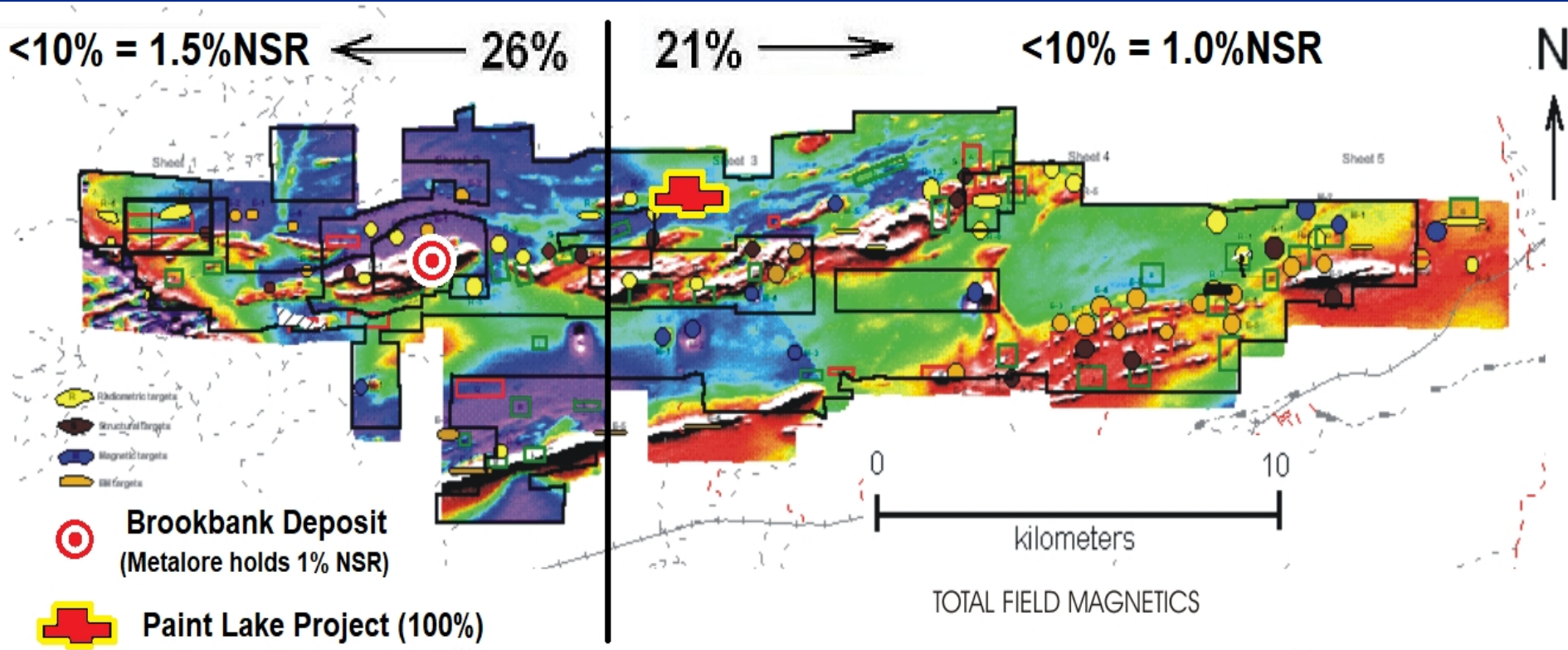
- 26% interest in 59 leased claims & 178 staked claims
- Metalore owns 1.5% NSR should its interest fall below 10%

## Walters & Leduc Properties:

- 21% interest in 440 staked claims
- Metalore owns 1.0% NSR should its interest fall below 10%

# BROOKBANK JV LAND COVERAGE

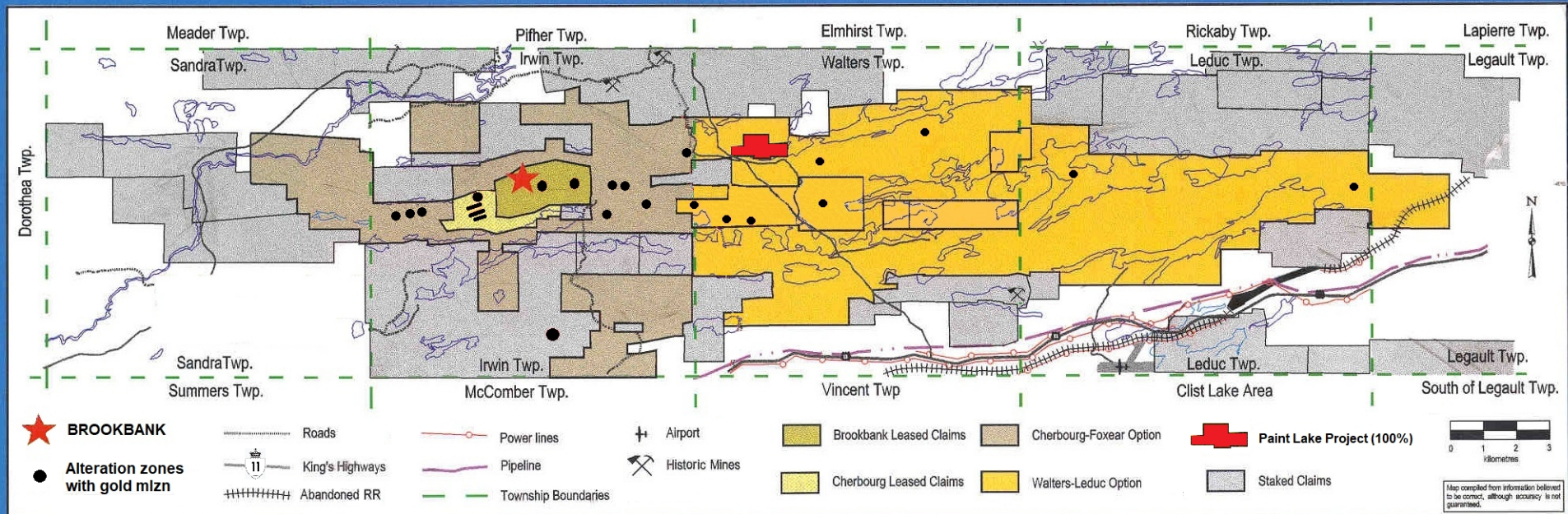
- 1.0% NSR in Brookbank Gold Deposit
- 26% interest in Sandra and Irwin Twps (1.5% NSR)
- 21% interest in Walters - Leduc - Legault Twps (1.0% NSR)



# BROOKBANK MINERALIZED ZONES

- >25 altered / mineralized zones within dilative structures
- Most geophysical targets await adequate exploration
- Exceptional potential for additional gold discoveries

## BROOKBANK JOINT VENTURE PROPERTIES - BEARDMORE - JELlicoe, ONTARIO



Trading Symbol TSXV - MET

# BROOKBANK PROPERTY POTENTIAL

## Brookbank Deposit:

- Additional resources likely southeast of deposit in sub parallel zone (Beaver Dam VG showing) and possible to depth below the known mineralization

## Cherbourg Zone:

- Additional mineralization probable down plunge and in separate sub parallel faults hosting quartz veins to south

## Fox Ear Zone:

- Additional mineralization likely down plunge to north

## Along strike of & sub//to Brookbank Structure:

- Potential to find significant mineralization along the 35 kilometre property including SHAFT ZONE south of Paint Lake, BEARSKIN EAST, NORDIC L WEST ZONE, etc

# BOARD OF DIRECTORS

Armen A. Chilian

Professional Geologist  
President and CEO

Donald W. Bryson

Principal of Bryson CPA Professional Corporation  
Director of Metalore since 2017

John C. McVicar

Broker of Record of BrokerLink Inc.  
Chairman of the Board; Director of Metalore since 1982

Bruce A. Davis

Former visionary for GE and 30 other companies (1989-1995)  
Owner of Davis Bros. Wood Products Inc., Grand Rapids, Michigan

Timothy J. Cronkwright

Director of Metalore since 2009

Owner of several businesses involved with farming, food service and medicinal products.

Trading Symbol: TSXV: MET

# TECHNICAL TEAM AND EXPERTISE

## Armen Chilian – President and CEO

Exploration Geologist with over 30 years experience  
Has co-managed multi-million dollar projects  
CEO since 2017 & significant shareholder of Metalore

## Eugene Puritch M.Sc. (Geology), P.Eng. – Mining Consultant

Geologist & Engineer with over 40 years world-wide experience  
Specializes in modeling of open-pit and underground resources

## Jim McIntosh (P.Eng.) – Hydrocarbon Consultant

Professional Engineer with over 30 years experience in  
development & production of hydrocarbon fields in SW Ontario

# METALORE CAPITAL STRUCTURE

Recent price: \$2.83 per share

Cash/GIC: \$5.0 million

Shares issued: 1,775,035

Market Capitalization: \$5.0 million

52 week high/low: \$3.44/\$2.40 per share

Institutional Ownership: 0%

Management & Director  
Ownership: >60%

Trading Symbol TSXV - MET

# METALORE RESOURCES LIMITED

59 years of Natural Gas Production  
in Southwestern Ontario

Exploration for Gold with JV partner Equinox Gold /  
Greenstone Gold Mines  
in Northwestern Ontario

Trading Symbol TSXV - MET